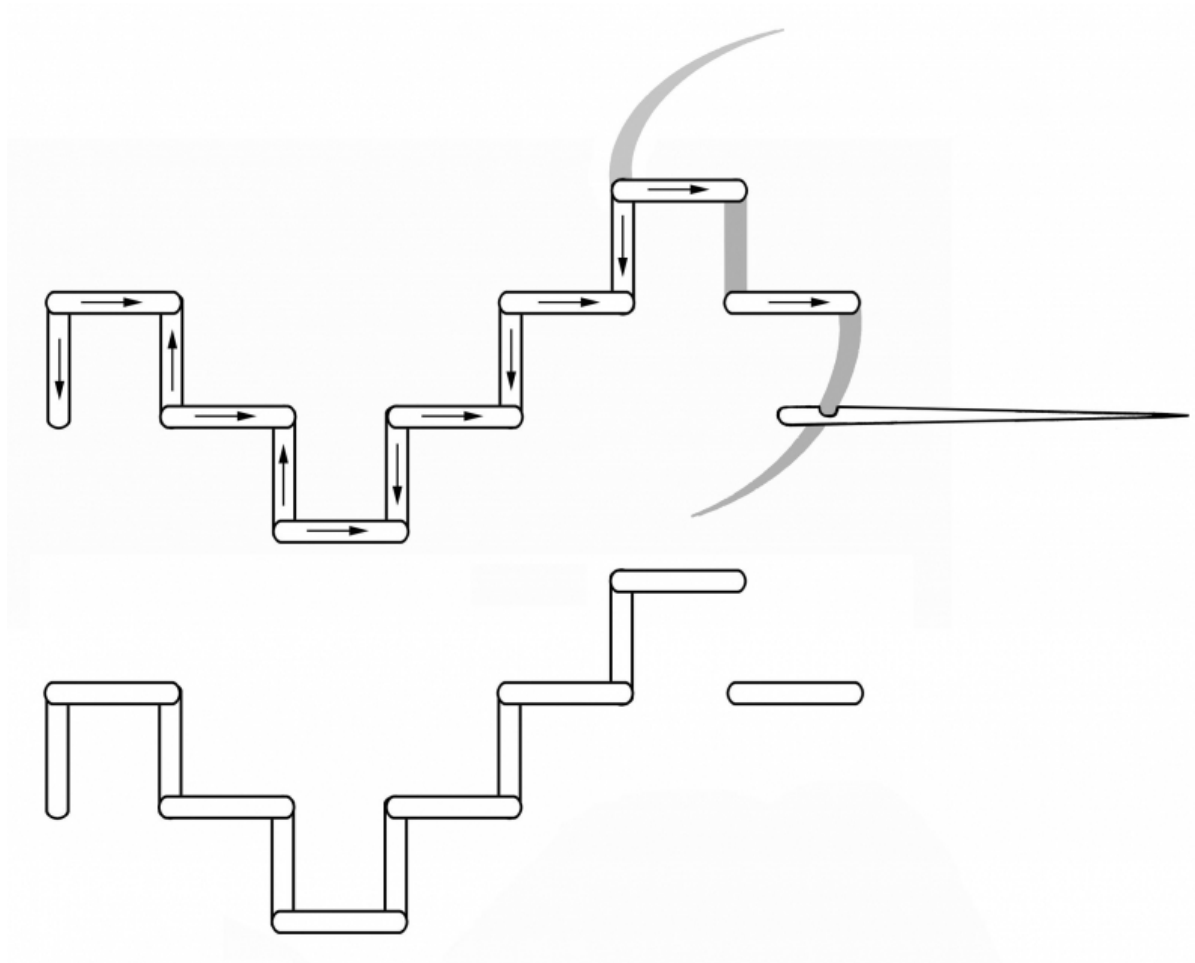


Mamluk Egyptian Embroideries

Double running embroidery

Double running stitch, also known as Holbein stitch, is a counted line stitch that is alike on both sides of the fabric. The thread runs over the outline, then filling in the rest of the stitch by doubling back. For example-



As taken from the Textile Research Centre website-

<https://trc-leiden.nl/trc-needles/techniques/embroidery/embroidery-stitches/double-running-stitch>

A simple design had been used in period for very good effect-

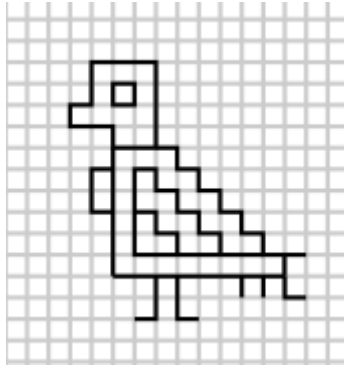


Linen embroidered in red silk, double running stitches. Ashmolean Museum Accession number EA1993.195.

Close up detail-



Chart-



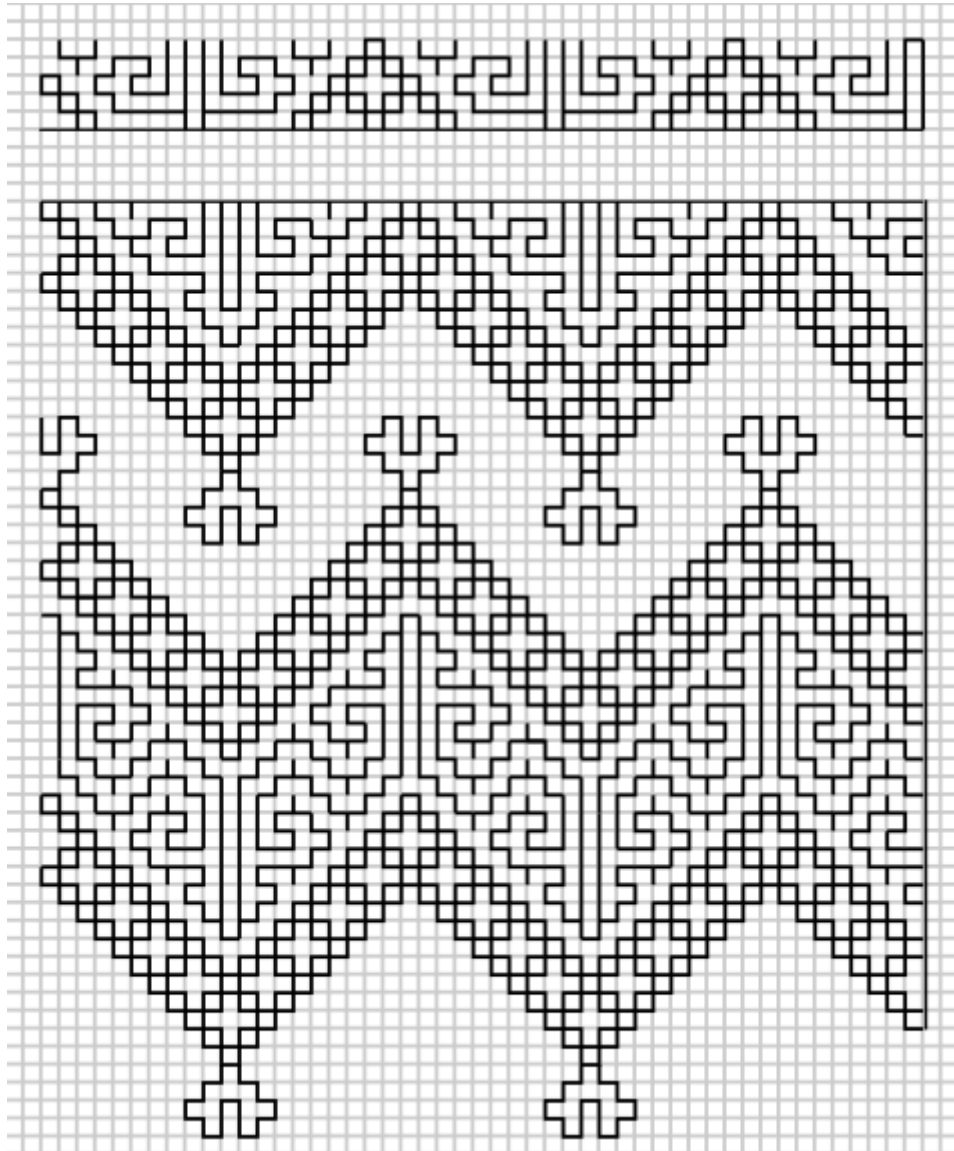
As charted by myself.

Double running was also used in complex designs too-



Linen embroidered with blue flax. Ashmolean Museum Accession number EA1984.560.

Chart-

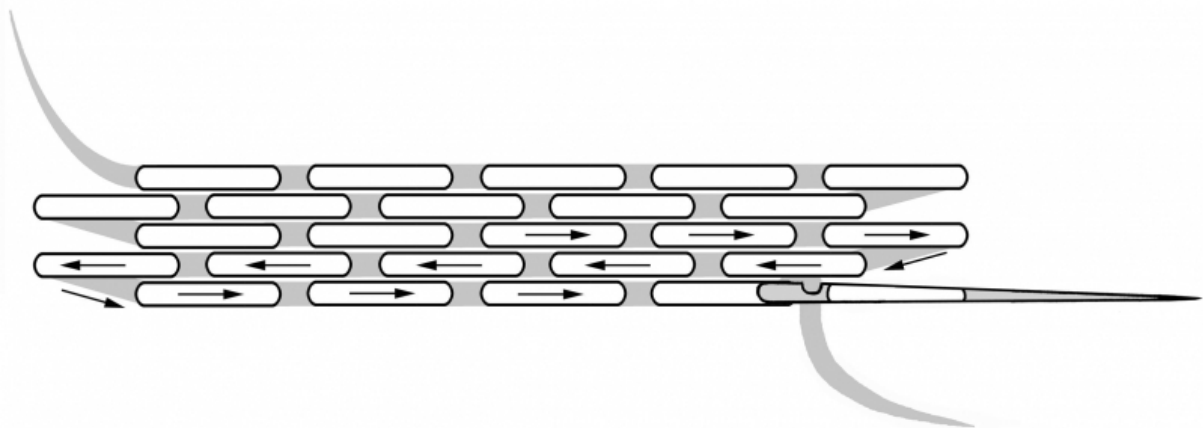


As charted by myself.

I have charted a few different charts of double running stitch designs. They can be found on my blog here- <https://awalimofstormhold.wordpress.com/tag/blackwork/>

Pattern darning embroidery

Pattern darning is a type of running stitch, worked over parallel lines to create a positive and negative design (on the reverse). This is another form of counted stitch.



As taken from the Textile Research Centre website-

<https://trc-leiden.nl/trc-needles/techniques/embroidery/embroidery-stitches/darning-stitch>

Very popular method of embroidery. Quite a few samplers have been found. For example-

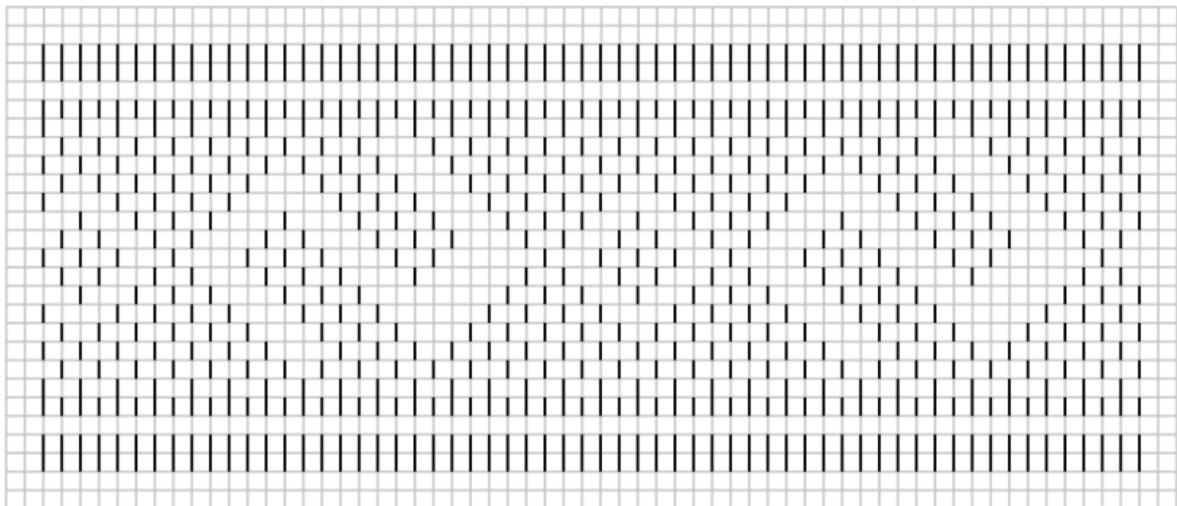


In the Ashmolean Museum, Accession number EA1984.490

Details of the top second left design-



And the chart of the design-



Pattern darning could also be very complex designs and used on a variety of textiles, such as towels, curtains. Pillows, hats, and trouser legs-

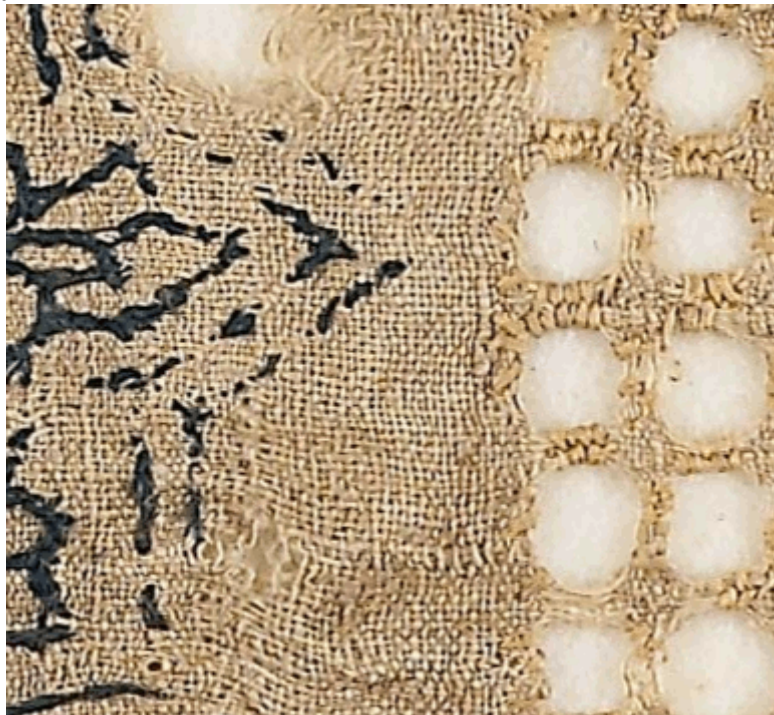


I have charted up a few pattern darning designs, which have been published on my blog. Please see this site- <https://awalimofstormhold.wordpress.com/tag/pattern-darning/>

Other embroidery types used



Part of a linen curtain, using needle woven openwork and blue & yellow silk in a floret design. Found in the Ashmolean Museum, Accession number EA1984.274. Detail of the textile, showing yellow silk for the openwork and blue silk in stem stitch for the florets-



Applique and couching was also used-



Textile is in the Ashmolean Museum, Accession number EA1984.133. Close up detail-



Other stitches used are gobelin-



From Ashmolean Museum Accession number EA1993.333.

Silver thread couching with split stitch-



From Ashmolean Museum Accession number EA1984.581

Stem and split stitch-



From Ashmolean Museum Accession number EA1993.230

Long arm cross stitch-



From Ashmolean Museum Accession number EA1993.357.

Recommended reading

Books and articles

Omar Abdel-Kareem, "History of Dyes Used in Different Historical Periods of Egypt", *Research Journal of Textile and Apparel*, Vol. 16 Issue: 4, 2012, pp.79-92.

Marianne Ellis, *Embroideries and Samplers from Islamic Egypt*, Ashmolean Museum, Oxford, 2001.

Louise W. Mackie, *Towards an Understanding of Mamluk Silks: National and International Considerations*, Muqarnas, Vol. 2, The Art of the Mamluks (1984), pp. 127-146 (20 pages)

Louise W. Mackie, *Symbols of Power: Luxury Textiles from Islamic Lands, 7th-21st Century*, The Cleveland Museum of Art, 2015.

L.A. Mayer, *Mamluk Costume: A survey*, Genève, A. Kundig, 1952.

Y. Stillman and N. Stillman, *Arab Dress: From the Dawn of Time to Modern Times*, Brill, 2nd edition, 2003.

Gillian Vogelsang-Eastwood, *Encyclopedia of Embroidery from the Arab World*, Bloomsbury Academic, 2016

Websites (to start from)

Ashmolean Museum- <http://jameelcentre.ashmolean.org/>

Victoria & Albert Museum- <https://www.vam.ac.uk/>

Qantara- <https://www.qantara-med.org/index.php?lang=en>

British Museum- <https://www.britishmuseum.org/>

Brooklyn Museum- <https://www.brooklynmuseum.org/>

Royal Ontario Museum- <https://www.rom.on.ca/en/collections-research>

Cooper Hewitt (Smithsonian)- <https://www.cooperhewitt.org/>

Cleveland Museum of Art- <https://www.clevelandart.org/>

Textile Research Centre- <https://trc-leiden.nl/trc-needles/>